

Smoke detectors are required in all new and existing residential structures in the City of Toledo. The property owner is responsible for the installation of smoke detectors and the occupant is responsible for maintaining the batteries if battery operated.

**PLACEMENT** - In one, two and three-family dwellings, a minimum of one smoke detector must be installed on each level of the structure such as the basement, first floor, second floor, etc.

In addition, at least one smoke detector is required in each sleeping area.

In residential structures greater than three-family, a minimum of one smoke detector must be installed in each sleeping area, or sleeping room.

A sleeping area is considered to be where the bedrooms or sleeping rooms are located in the structure. In the case where a sleeping room or a bedroom is separated by other rooms such as a living room or a kitchen, it is considered to be a separate sleeping area and also requires a smoke detector.

**INSTALLATION** - In new residential structures, smoke detectors must be wired directly (hard-wired) into the electrical system. Electrical permits must be obtained from the City of Toledo Division of Inspection before installation.

In existing residential structures, smoke detectors can be wired directly into the electrical system or be battery powered.

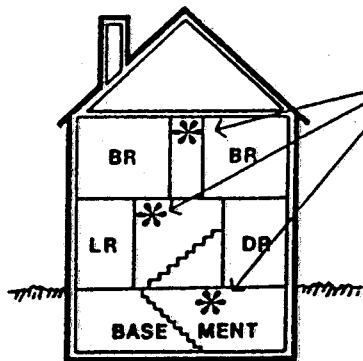
Check the instructions that come with the smoke detector. Follow the manufacturer's directions as to location and placement where they do not conflict with the Toledo Municipal Code.

As an alternative to self-contained smoke detectors, an approved fire detection system may be installed. Approval and permits must be obtained from the Toledo Fire Division before installation.

**MAINTENANCE** - Occupants in existing residential structures are responsible for battery replacement in battery operated smoke detectors. Property owners are responsible for all maintenance of smoke detectors other than battery replacement. Tenants cannot remove or render a smoke detector inoperative.

It is the responsibility of the seller, landlord, lessor, or sublessor to certify in writing to new occupants that all detectors are installed and in proper working order.

## Smoke Detectors save lives!



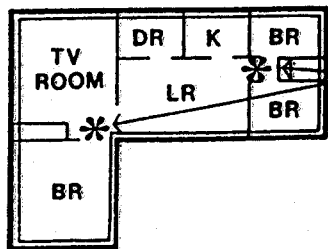
**MULTI-LEVEL**

### PLACEMENT multi - level structure

1. Install at least one smoke detector on each level such as the basement, first floor, second floor, etc.
2. Install at least one smoke detector in each sleeping area where bedrooms or sleeping areas are located.
3. If two sleeping areas are separated by any significant distance, each should have its own smoke detector.

### NOTE:

For extra protection, install smoke detectors in each bedroom, especially if the occupant smokes in bed or sleeps with the bedroom door shut.



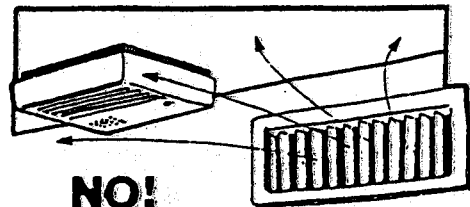
**SINGLE-LEVEL**

### Placement single - level structure

1. Install at least one smoke detector in each sleeping area where bedrooms or sleeping rooms are located.
2. If two sleeping areas are separated by any significant distance, each should have its own detector.

### INSTALLATION TIPS

1. Install smoke detectors at least 6 inches away from where the wall and the ceiling meet.
2. Avoid locating smoke detectors in front of air supply outlets, or between the bedroom and the furnace cold air return.
3. Avoid installing smoke detectors on a ceiling which is substantially warmer or colder than the rest of the room.
4. Use only U.L. approved smoke detectors. Follow the manufacturer's instructions as to the location and placement when they do not conflict with the Toledo Municipal Code.
5. Check batteries weekly.



FIRE PREVENTION BUREAU · 545 N. HURON ST · 245-1140

· DIVISION OF INSPECTION · ONE GOVERNMENT CENTER · SUITE 1600 · 245-1220 ·